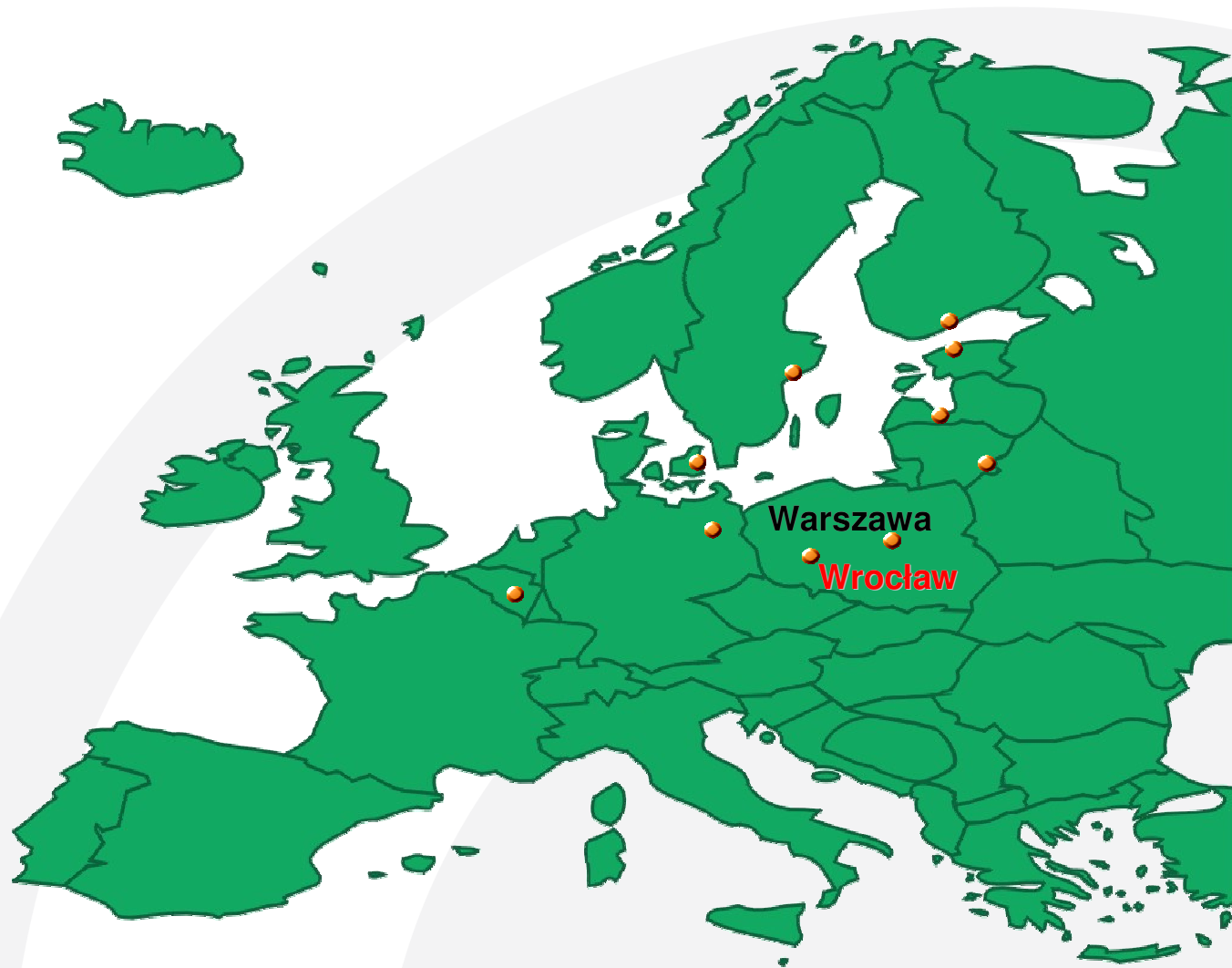


Lower Silesia, Poland



1. Regional Governance

From 1999 three-tier territorial division of the country:

Gminas, (and cities with powiat status and auxiliary service entities (eg., construction supervision inspectorates, geodetic and cartographic documentation centres)

Powiats,(powiat starosta offices and auxiliary services)

Voivodships,(marshals' office and voivodships self-government entities

The Lower Silesia Province is divided into:

- 30 counties (powiat), including four municipal counties,
- 169 communes (gmina)(36 municipal communes, 54 communes of mixed municipal and rural character and 79 rural communes).

Gmina is the basic unit of the structure.

1.2 Regional Governance Scheme

Province is Poland's largest administrative unit and the seat of the local government auxiliary service entities including: trade inspectorates, monument preservation, veterinary offices, drainage and water facility boards as well as education offices

The organs of self – government are :

1. regional assembly (parliamentary and supervising body)
2. board of the voivodship (executive body). Supervision over the self – government is held by the governor and Prime Minister and considering financial matters regional audit chamber.

Term of presidents lasts 4 years.

1.3 Department of Regional Development of the Lower Silesia Marshal Office

- Selected tasks :
Preparation of Regional Development Strategy project and it's actualization, monitoring and coordination.
- Recognition and analysis of the economical problems of the region and presenting solutions.
- Coordination of economical programs accepted for implementation by the Board of the Region.
- Stimulation of economical competitiveness of the Region.
- Designing, implementing and supervising the realization of regional programs, also co financed from structural funds.
- **Defining the basic rules of cooperation within the region between the self-government, research organizations, non government organizations and other social and economic groups (?)**

1.4 Department of Regional Development of the Lower Silesia Marshal Office

- Preparation of action projects and documents concerning regional and interregional policy of the Voivodship and coordination of the Office's activities.
- **Conducting socio-economical situation analysis of the Lower Silesian Voivodship.(?)**
- Preparation and distribution of information for potential investors.
- Participation in the energy and fuel supply in the Region.
- Realization of tasks resulting from activities of the Odra River Plenipotentiary concerning complex management of the Odra river basin and it's inlets.
- Conducting issues concerning the road system in the region's territory and traffic management in the regional roads.
- Performing tasks resulting from the road transport resolution, transit legislation and the rights to reduced price commuting for passengers' resolution.

1.5 Regional innovation supporting infrastructure.

Institutional Potential

- 120 institutions supporting, entrepreneurs – (Polish standard for the voivodship)
- Self-government supports competency building and regional clusters by integration of the stakeholders.
E.g. Energy Strategy for Lower Silesia
- Euroregions in Lower Silesia (international cooperation, european funds, supporting social and educational initiatives of innovative character).

2. Structure of the Entity

Wroclaw University of Technology

- *High education, governmental, non profit*

The employment level: **3 745 employees, half of which are academic teachers**

Male students: **23 500**, female students: **8 400 (26%)**

The number of titular professors – **148**

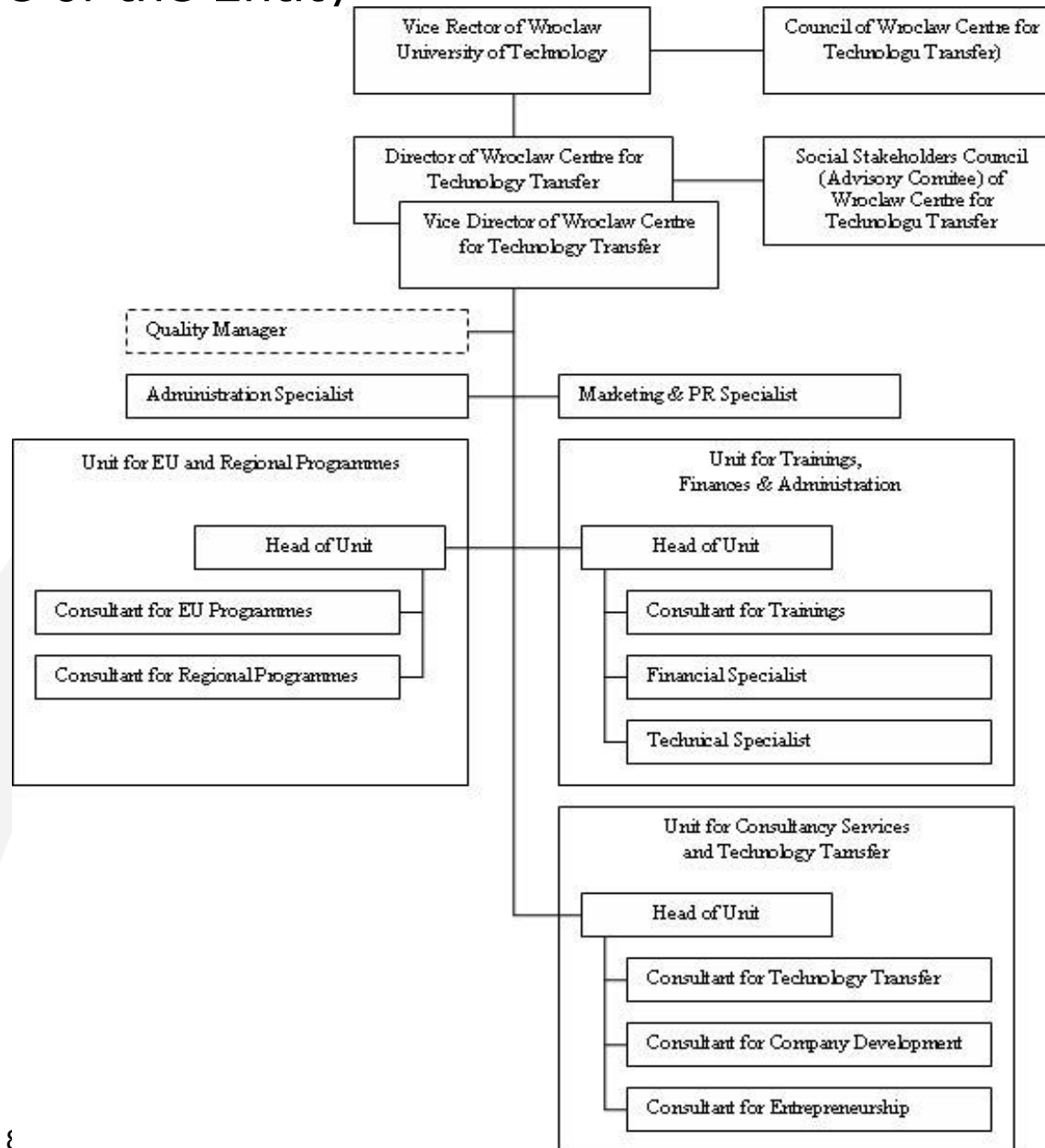
The number of doctors habilitated
(post-doctoral degree) – **245**

The number of doctors – **1 125**

Wroclaw Center for Technology Transfer (semi-independent department of Wrocław University of Technology)

- 25 employees
- *Self-financed (mostely, commercial trainings EU project, structural Funds), centralised finacial department*

2.1 Structure of the Entity



3. Mission and Services

- **Bridging the gap between university and industry and joining the university know-how with industrial experience.**
 - **to increase the productivity and competitiveness of enterprises through innovation**
- WCTT mission is fulfilled by providing:**
- **Training, seminars, and conferences**
 - **consulting and assistance by the implementation of advanced methods, technologies and organization**
 - **Domestic and international technology transfer**
 - **Promotion of undertaking European Union Framework Programs**
 - **Innovative enterprise assistance**



3.1 main services, core-competences

1. the National System of Services - a network established in 1996 by the Polish Agency for Enterprise Development, involving certified organizations running training and counseling services for SME sector.

2. Innovation Relay Centre, since 1997

3. Regional Contact Point in the NCP FP6 framework since 1999

4. Trainings

Post-graduate studies: „Quality Management”

Standardization of work time,

Workshops ISO 9001:2000,

Project Management,

Simulation Lean Manufacturing

Environment Protection Management

Quality Management Auditor

Delivery and Stock Management

Value Stream Mapping

4. Activities and target groups

WCTT publishes:

- High-Tech newsletter quarterly, „Lean Butterfly“, quarterly
- information brochures: „We ensure development through innovation“, „Strategy of success“, „Consultations and trainings services“ mailing to 3000 SME“

WCTT publishes books:

- *Learning to see, Mike Rother and John Shook, foreword by Jim Womack*
- *Creating Continuous Flow, Mike Rother and Rick Harris, foreword by Jim Womack*
- 6th Framework Programmes of the EU guides

Awareness events:

- Technology and Innovation – development “SME Possibilities to win support for UE funds”.
- Foresight – scenarios for regional economic development
- Forum “Regional Innovation Strategy -Lower Silesia”
- Lean Manufacturing Conference
- Info day “Innovation Strategy” and “European Commission competitions – RIS” for new members
- of an association
- Six Sigma Conference
- Contest for an „Idea for innovative company “, Promotion of academic entrepreneurship, 235 participants 2001-2004, 5 start-ups

4.1 Activities and target groups

National Innovation Network

- WCTT consultants were involved in the activities of Task Group, which main aim was to elaborate an idea of Polish National Innovation Network. The Network objective is to support domestic technology transfer and to stimulate the innovation creation in Polish SME, yearly 1000 hrs consultancy free of charge:
 - How to establish and run a company
 - Innovations in enterprises
 - Programmes for MŚP, preparing applications for the funds

Technology transfer:

- The WCTT task within IRC network is to support international technology transfer, polish enterprises abroad promotion, cooperative meeting organization.
 - technology audits;
 - technology transfer negotiations conducted;
 - consultation of technology transfer

4.2 Activities and target groups

management of major regional projects:

- **Lower Silesia RIS (RSI aproved by regional self-government)**
- **EFS** – Building network of Units for Knowledge and technology Transfer
- **EFS** „Training for managers to increase competitivness of enterprises” for 3828 trainees
- **ERDF** "STIM" Mebmer of the National Network (of regions) for TT and supporting innovation in SME
- **ERDF** - Consultancy Desk for SME

European programs:

- **UPRIS**
- **IMPACSCAN**

INTERREG III C: TEICO-NET (Technology, Enterprises, Innovation, Cooperation – Network.

GET-IN – „Getting Small and Medium-Sized Enterprises from Candidate Countries To Increase Participation on IST Project.”

4.3 Important target groups

- Polish small and medium Sized Enterprises
- Government organizations, Ministries, State Committee,
- universities, research centers and units of public administration
- 600 national and international companies e.g:
BOSCH Braking System, EXIDE, DEAWOO MOTORS, FIAT AUTO POLAND, GKN Automotive, VOLVO Polska, CADBURY, OVITA NUTRICIA, SCHOLLER, ABB, DeLAVAL AGRI, DANFOSS, Thomson multimedia, GlaxoSmithKline, Gates Polska, Masterfoods, Pratt & Whitney, Wood-Mizer Industries.

5. SWOT overview

<u>STRENGTHS</u>	<u>WEAKNESSES</u>
<p>Participation and coordination of 5 regional projects concerning innovation system, technology transfer and innovative services for companies.</p> <p>Established cooperation with Self-Government (Department of Regional Development is a partner in UPRIS Project).</p> <p>Previous relations with research institution as Regional Contact Point for FP.</p>	<p>Traditional level of organization and strategy planing and standads of services.</p> <p>Short time of experience with RIS project, lack of strong relations between innovative enterprises, (recognised during the needs analyses)</p>
<u>OPPORTUNITIES</u>	<u>THREATS</u>
<p>WCTT becomes an „incubator“ of the innovative processes, lack of leaders.</p> <p>Benchmarking with the experienced regions. Synergies with the project UPRIS and other upcoming projects eg. Creation of the Center for Regional Studies.</p> <p>New Regulation act concerning financing of innovations in companies.</p> <p>Influencing development of the regional administrative structure.</p>	<p>Difficulties in creation subregional and regional platforms exchanging experiences, cooperating on a daily basis. Centralized decition making (the University of Technology). Small support from the research institutions, mental barrier</p>

6. Regional context factors

Area: 19 948 square km

borders on the Czech Republic in the south (state border length - 432 km) and Germany(Saxony) in the west (state border length - 80 km).

Population: 2 971 100 (*urban 72%*) 7,7% PL

Capital city: Wroclaw other Legnica, Walbrzych, Jelenia Gora, 11 towns in the region populated by more than 20,000 people, many towns with fewer than 20,000 inhabitants in the inter-montane valleys. Many of these towns are famous spas and holiday resorts.

Economy

The region ranks: -

1st in the production of electrical turbo-machines, domestic refrigerators, deep freezers, washing machines, spin-driers and cookers, table porcelain and china, and crystal glass; 2nd in the production of cotton and cotton-like fabrics, machinery and tools for the construction industry, machinery and tools for road construction and land improvement industries, as well as detergents and washing-up liquids.



6.1 Regional context factors

General regional information

✓ Employment structure by sectors

- **Agriculture 10,2 %**

- **Service 56,9 %**

- **industry 32,8 %**

✓ Unemployment rate **26%**

✓ GDP per capita **7,9 % 21.139 pln approx. 5079 €**

(market services 48,6%, industry 25,9% (of which manufacturing 19,6%), non-market services 16,4%, agriculture&forestry 2,6%)

• **Main industrial sectors:**

- **mining and quarrying,**

- **food-processing industries and beverages,**

- **textiles,**

- **manufacture of chemicals and chemical products ,**

- **manufacture of electrical machinery and apparatus (precise, medical devices, optoelectronics, clocks and watches,**

- **manufacture of machinery and equipment,**

- **manufacture of motor vehicles, trailers and semi-trailers,**

- **manufacture of basic metals,**

- **electricity, gas and water supply,**

Services: financial broking, real estate, renting and business activities

6.2 Regional context factors

- ✓ Number of companies **305,9 thousand**
- ✓ Percentage of SME's **99%**
- ✓ Percentage of innovative SME's – lack of data
- ✓ **3 Special Economic Zones:**
 - R&D expenditure as percentage of GDP – **0.45%** (2002)
 - R&D employment as percentage of the total work force **4,7%**
 - R&D expenditure in public sector **55,2%**, in business enterprise sector **32,8%**, in high education sector **3,4%**, foreign organisations **3,0%**
 - research organisations **70**
 - 5 Centers of Excellence: Centre for Advanced Manufacturing Technologies, "Sol-Gel Materials and Nanotechnology, Materials Recycling Center of Excellence, Immune system development and function: IMMUNE-Centre combines research and education with clinical practice, Centre for Low Temperature Studies of Promising Materials for Applications

6.3 Regional context factors

- Number of higher education institutes
- **14 public universities and 18 non public over 150.000 students, 3000 Phd and 10.000 postgraduates**
- Number of science and technology parks
- **2 TT institutions (WCTT, Technology Transfer Agency)**
- **4 incubators**
- **1 Technology park**
- **5 Agencies for regional development**
- **Euro Info Center**

- Programming and management of Regional Operational Programme for 2007-2013 (integration of sectoral policies on regional level)
- **Regional Innovation Strategy**
identifying priorities for regional development on the basis of innovation needs (Ministry of Education)
UpRIS Upgrading Lower Silesia from regional Innovation Strategy towards operating System
- Interreg A,B,C

7. Rationale for participation

- *Why interested in participating in this consortium?*
- Administrative procedures and services for entrepreneurs is negatively evaluated in RIS analyses. (taxation offices, self-government).
- The efforts to attract foreign investors are not equal in pro investment activities towards own, capital. Very few encouragements for development of innovative firms (incubators and technology parks)
- *What are your expectations regarding the outcome of the project?*
- Consolidation of the innovative environment
- Development of new instrument evaluating specific activities to increase technology entrepreneurship in the region – opening new programmes on the regional level

7.1 What is the expected impact on the policy making in your region?

- Pro-innovative activities of administration includes:
 - facilitation of procedure and changing the attitudes towards enterprises and implementation of service system for innovative SME.
 - elaborating and lobbying on regulations on the national level
 - opening regional debate on innovations in order to establish cooperation among the self-governments and benchmarking on the best experiences,
- *Which effects are aimed for through this project for the benefit of the region?*
 - Optimising the efficiency of the innovation support systems and developing infrastructure (Creation of new organizations to support exploitation of regional potential)
 - Policy recommendations, commitment of the policy makers
 - Limited strategy in favour of foresight and flexible changes, simplifying procedures
 - Replacing nominal priorities with proactive ones — focusing on those where there is tendency for change („play for region“)

A little bit of history

The town walls of Wrocław have witnessed a millennium of stormy and eventful history of several nations: Poles, Germans, Czechs, Austrians and Jews

1000 - The oldest written reference to Wrocław - setting up the bishopric; the reign of Piast dukes

1335 - The town is taken over by the Czechs

1526 - The Habsburgs start to rule Wrocław

1742 - The beginning of the Prussian reign in the town

1945 - As a result of the capitulation of the Nazi Germany, Wrocław belongs to Poland

