



Innovation Policy Impact Assessment
at Regional Level

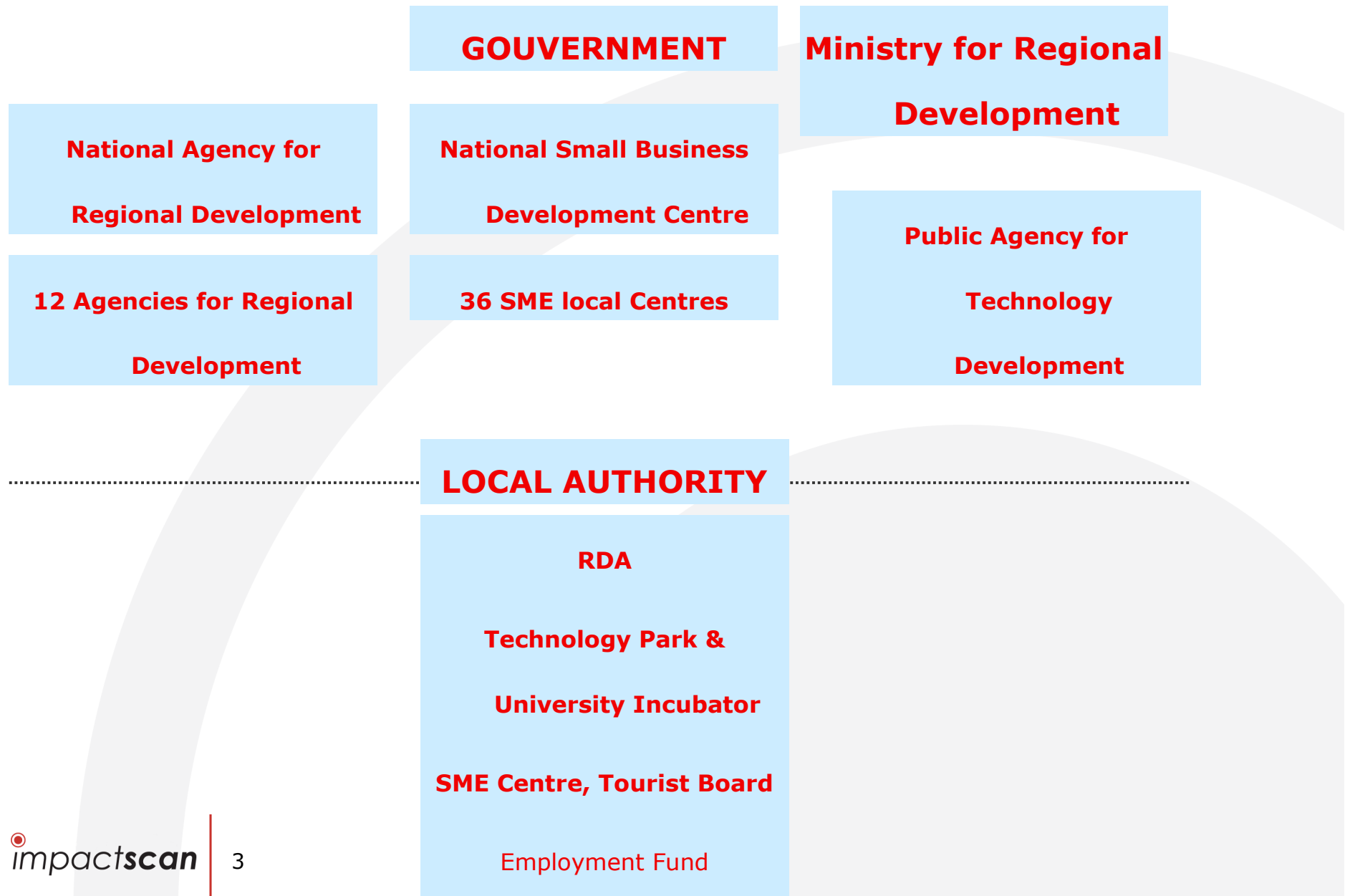
Partner Region Presentation:
SLOVENIA

Kick-off meeting, June 27th-28th 2005

Contents

1. Regional Governance Scheme
2. Structure of the Entity
3. Mission and Services
4. Activities and Target Groups
5. SWOT overview
6. Regional Context Factors
7. Rationale for Participation

1. Regional Governance Scheme



2. Structure of the Entity

CITY OF LJUBLJANA – capital of Slovenia

- *legal status: **public institution***
- *overall structure (parent company, sponsoring bodies): **local authority***
- *size and nature: **550 employees***
- ***Turnover: 50 billions of tollars, 208 mio EUR***
- *organization chart:*

Mayor – Innovation

City Council (45 members)

Development Board

City administration:

Director

12 Departments

8 Public service providers

- *sources of income: **transfers from state budget, real-estate tax, property tax, local tourist tax, market services income***

2. Structure of the Entity

CITY OF LJUBLJANA - Department for Economic Development and Tourism

- *size and nature: **12 employees***
- *fields of work: **SME& tourism& agriculture development, RIS coordination***

Mission and Services

1. *What is the mission statement (primary objective) of the Entity?*

building supporting environment for SME development

1. *What is the main service portfolio?*

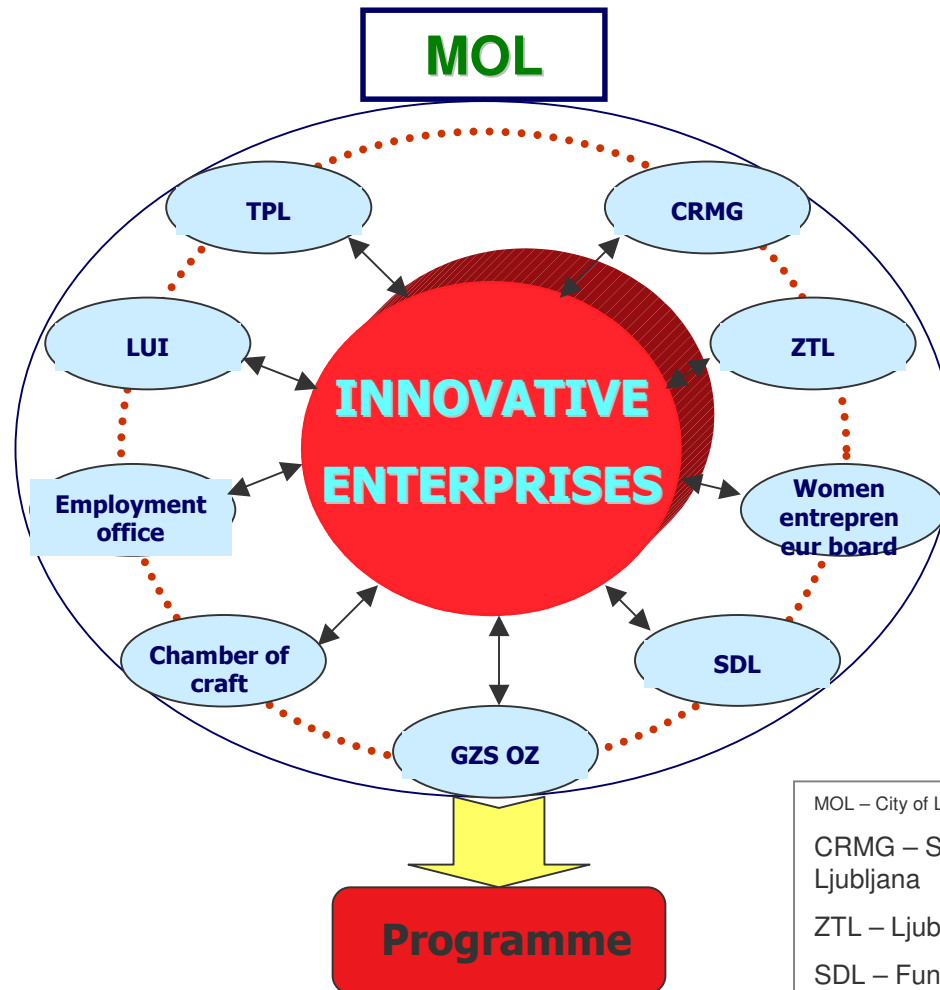
strategy development, coordination of key actors in the implementation phase of strategies, support schemes development

3. *What are core-competences?*

SME&Tourism&Agriculture policy development, international relations,

RIS Slovenia

INNOVATION SUPPORTING SYSTEM OF LJUBLJANA



MOL – City of Ljubljana

CRMG – Small business development center of Ljubljana

ZTL – Ljubljana tourist board

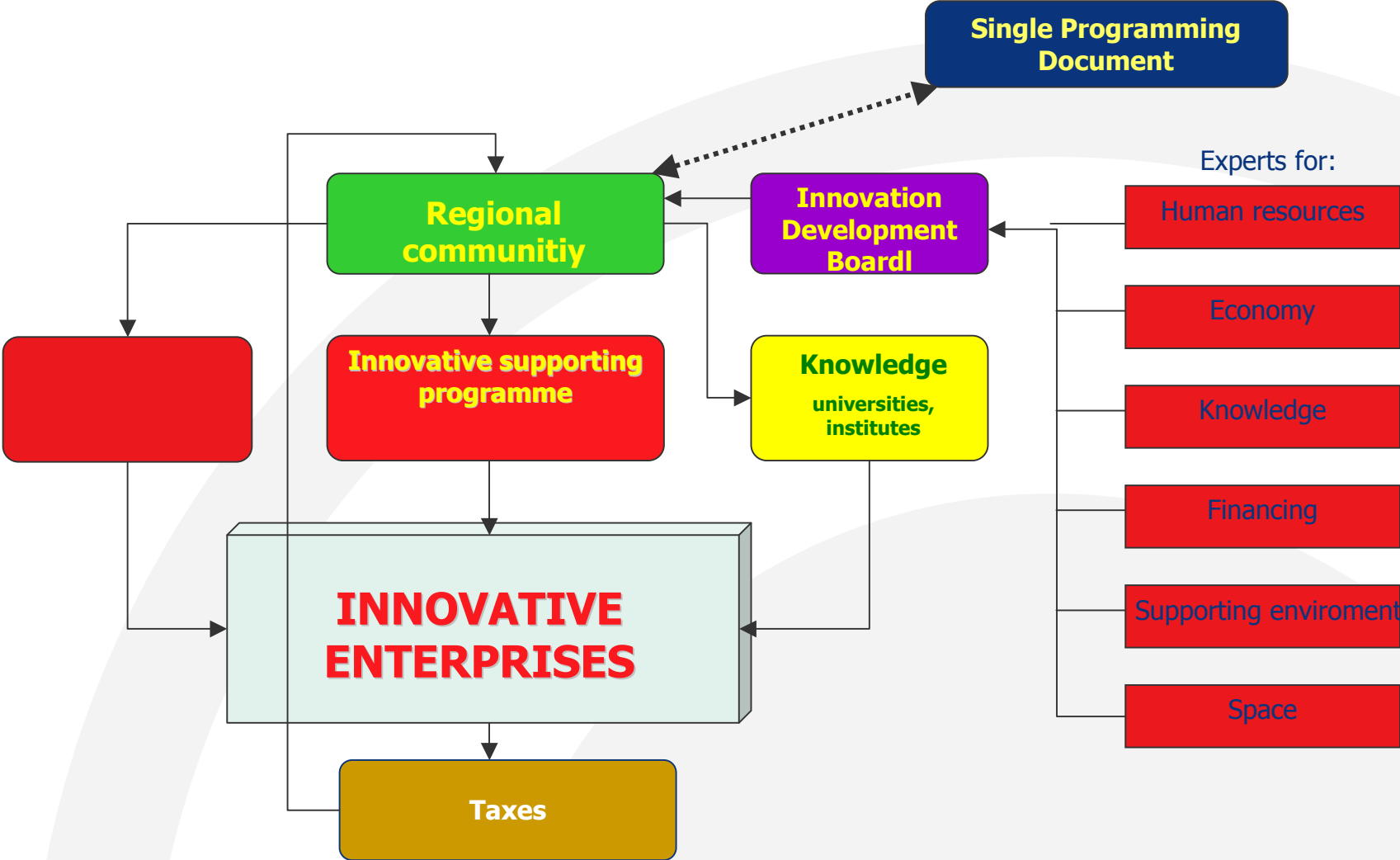
SDL – Fund for workers of Ljubljana

GZS OZ – Chamber of commerce for Ljubljana

LUI – Ljubljana university incubator

TPL - Technology park of Ljubljana

REGIONAL INNOVATION SUPPORT ENVIRONMENT SCHEME



4. Activities and target groups

- *information transfer: mailings, publications, promotion by direct contact, animation and awareness workshops*
 1. **Relay centre for the the projects related to RIS implementation, Annual National conferences on Innovation 5th, transfer of good practices among subregions, two monthly Bulletin "Business Opportunities" City of Ljubljana- 10.000 issues,**
- *technology transfer: general innovation and TT advice, introduction of new products and processes in local brochure, ...*
 1. *Signposting of TT needs and offers of city companies via IRC and directly*
- *skills transfer: promotion of training...*
 1. **Through programees Ljubljana Small Business Development Centre, Technology Park Ljubljana ,Ljubljana Employment fund, Ljubljana University Incubator**
- *strategic support: funding, cofinancing, information flow,*
 1. **Co-financing: SME clusters, programmes: SBDC (training, promotion, , information, subsidies, guarantees), Employment Fund, TPL, LUI)**

Which are the most important target groups?

1. **Key actors responsible for regional development, Small/medium entrepreneurs, start ups (low&high tech), finacial sector, cultural institutions**

5. SWOT overview

Mention some major issues on strengths, weaknesses, opportunities and threats regarding your Entity related to this project.

<p style="text-align: center;"><u>STRENGTHS</u></p> <ul style="list-style-type: none"> • <u>Implementation of RIS Slovenia, SF 2004-2006</u> • <u>Continuous activities of project management team and working groups of SLORITTS</u> 	<p style="text-align: center;"><u>WEAKNESSES</u></p> <ul style="list-style-type: none"> • <u>Lack of innovation culture among the staff</u> • <u>Lack of Cooperation and support to subregions</u> • <u>Low innovation budget</u> • <u>Transport and logistic</u>
<p style="text-align: center;"><u>OPPORTUNITIES</u></p> <ul style="list-style-type: none"> • <u>Implementation of RIS Slovenia, SF 2007-2013</u> • <u>Attracting area for foreign investments in high tech and logistic</u> • <u>EU support centre for transfer of good practice to ACC, Balkan countries in the recoin</u> 	<p style="text-align: center;"><u>THREATS</u></p> <ul style="list-style-type: none"> • <u>To slow growth of innovation capacity in Slovenia in comparison with Alpe Adria regions</u> • <u>Demografic parameters</u> • <u>Unfriendly innovation environment</u>

6. Regional context factors

Geographic, economic and institutional setting

- General regional information
 - ✓ Population: 2 mio
 - ✓ Surface: 20.273 m²
 - ✓ Main towns: Ljubljana, Maribor, Celje, Koper, Novo mesto, Kranj, Murska Sobota
- Economic structure
 - ✓ Percentage (value added as perc. in GDP) agriculture/service/industry: 3/62/30
 - ✓ Unemployment rate: 6,6%
 - ✓ GDP per capita: 12.977€ p.c., PPS 16.400€ p.c.
 - ✓ Main industrial sectors: automotive, chemistry, pharmaceutical, electronics, optical equipment, transport
 - ✓ Number of companies: 110.000
 - ✓ Percentage of SME's: 93 micro, 5 small, 1,7 medium, 0,3 big companies
 - ✓ Percentage of innovative SME's: 22
- R&D and innovation
 - R&D expenditure as percentage of GDP for public sector, business enterprise sector, high education sector: 1,53
 - R&D employment as percentage of the total work force: in public sector, in business enterprise sector, in high education sector (12.000) 1,3%
 - Main research centres or research organisations: Institute Jožef Stefan, Institute for Economic Research,...
 - Number of universities and higher education institutes: 3 universities Ljubljana, Maribor, Koper, 20 faculties in Ljubljana, Polytechnica, 18 RTDI institutes
 - Main transfer centres and technical centres in innovation: IRC Slovenia-IJS, Agency for Technology Development, 3 technology clusters (automotive, logistic, tooling)
 - Number of science and technology parks: 4 and 40 industrial zones
- Experience in European projects: Ecos – Ouverture (»Europe of traditions«, Green Action II, STAN – Start up Assistance Network) Phare – Guarantee Fund,, RE URBAN MOBIL, RIS/RITTS-SLORITTS

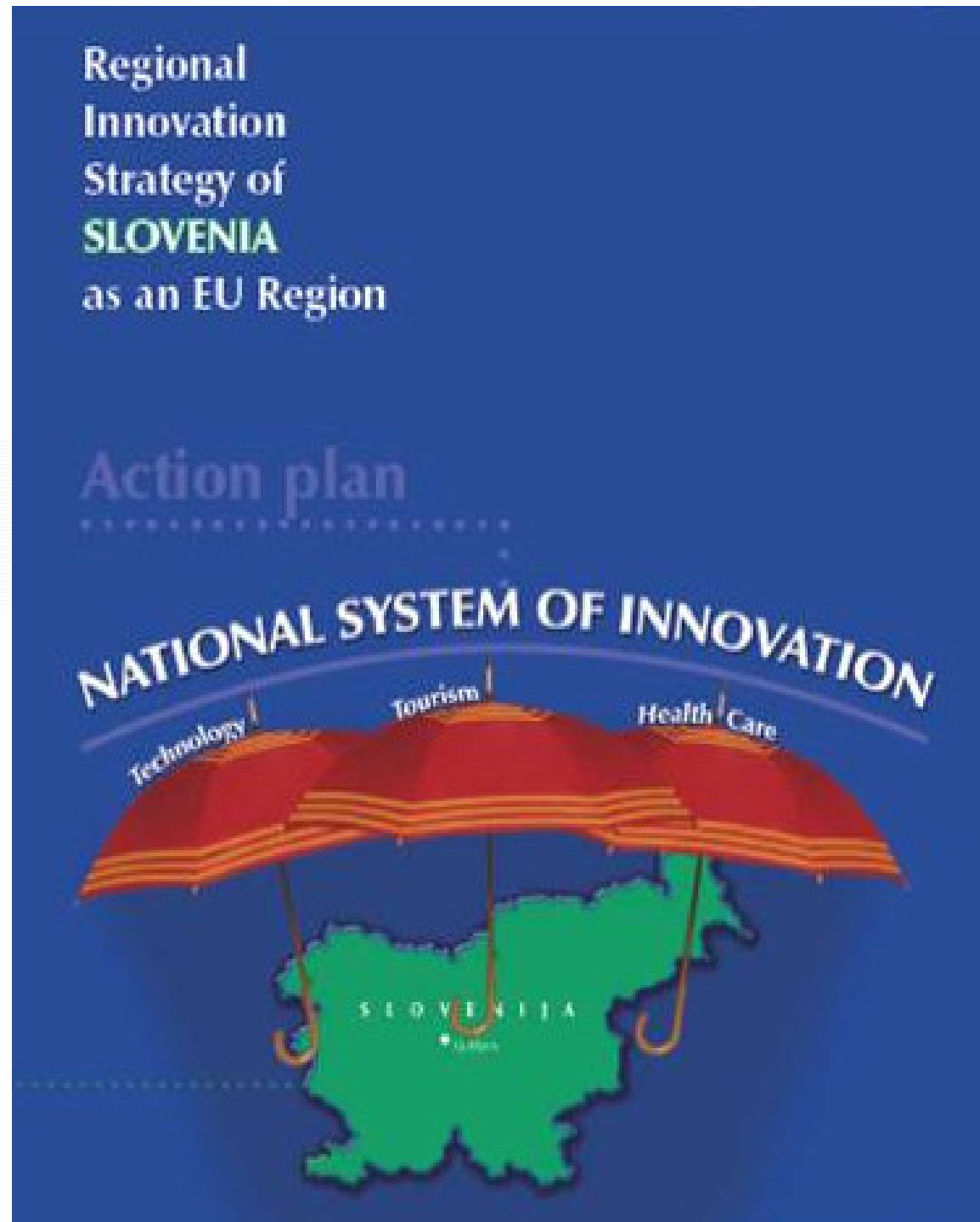
7. Rationale for participation

- *Why interested in participating in this consortium?*
- 1. Responsible for implementation of RIS action plan of Slovenia, 3 umbrellas: Technology, Tourism, Health care, continuous transfer of good practices to EU and back, benchmarking, B2B opportunities among the partners**
- *What are your expectations regarding the outcome of the project?*
- 1. Development and testing of the methodologies and the instruments for evaluation of the impact of innovation policy in Slovenia**
- 2. Simple and friendly to apply tools**
- *What is the expected impact on the policy making in your region?*
- 1. Continuous benchmarking among the partners within the project will contribute to redesign of NSI and innovation policy**
- *Which effects are aimed for through this project for the benefit of the region?*
- **Integration of subregional initiatives on the national and inter-regional level**
- **Achieving above critical mass and specialisation**
- **Optimal human and financial resource management by synergistic effects**
- **Improve the legislation toward friendly innovation policy**
-

THANK YOU FOR YOUR
ATTENTION

WELCOME TO SLOVENIA

Vanja Rangus
Prof.dr.Uroš Stanič
E mail:
vanja.rangus@
ljubljana.si





Use this slide for grafics...